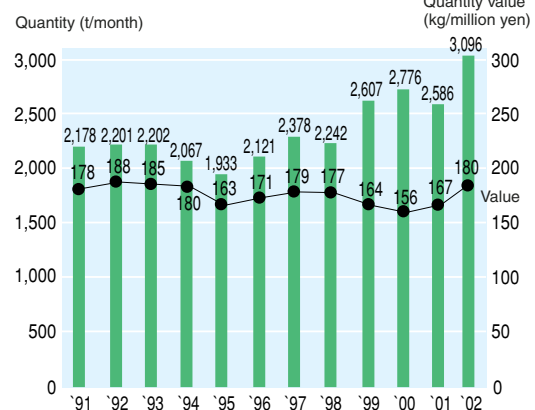


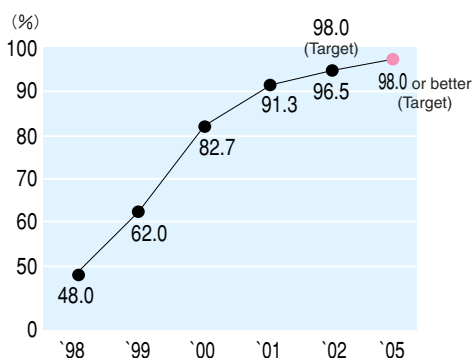
## Group Data [Voluntary Plan]

### Voluntary Plan 1

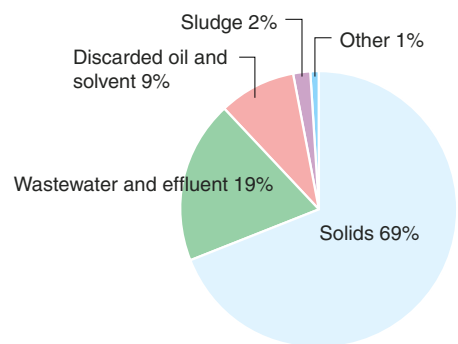
Amount of industrial wastes



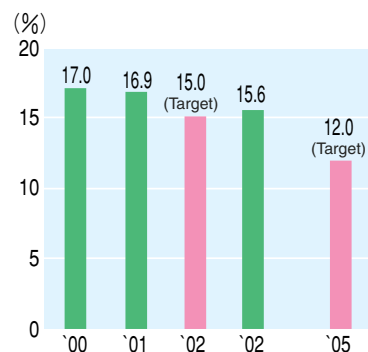
Recycling rate



Breakdown of amount of industrial wastes

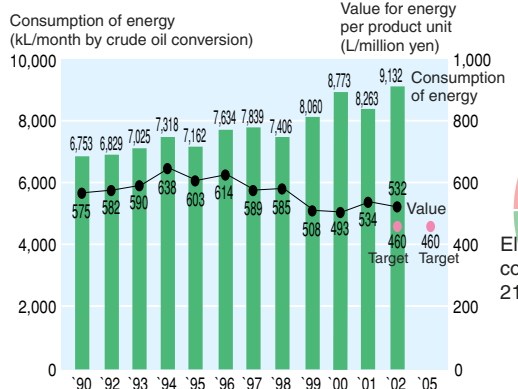


Value of industrial waste ratio

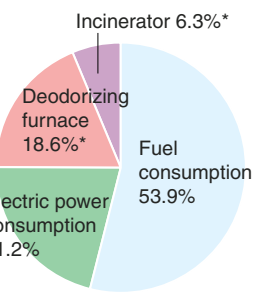


### Voluntary Plan 2

Consumption of energy and consumption of energy per product unit



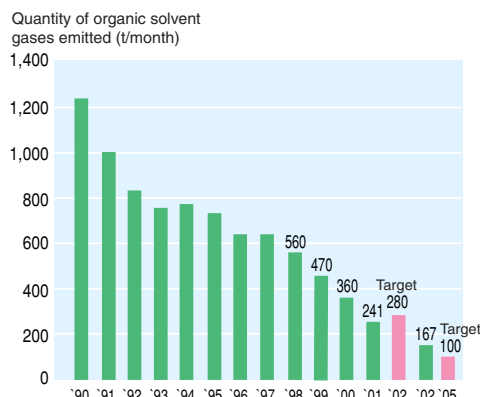
CO<sub>2</sub> emission by application



\*Calculated from analysis results

### Voluntary Plan 3

Quantity of organic solvent gases emitted



## Group Data [PRTR]

### Pollutant Release and Transfer Register (PRTR) Initiatives

Before PRTR became law, Nitto Denko established special in-house regulations concerning control of chemical substances in 1995. Actual preparations for mandatory PRTR started in 1997. In 2001, Nitto Denko submitted the company's first PRTR data that showed the company handled 77 of the substances designated under the PRTR Law, 8 of which were discharged in quantities of 1 ton or more. In fiscal 2002, Nitto Denko handled only 72 regulated substances and di-n-butyl phthalate discharge was less than 1 ton, however discharge of ethylbenzene and ethylene glycol monomethyl ether surpassed 1 ton, pushing the number of substances discharged in excess of 1 ton to 9.

Nitto Denko releases information in conformity with the PRTR Law of the Ministry of Economy, Trade and Industry and the Ministry of the Environment. Additional information is released in this report so that readers can understand the progress that Nitto Denko is making in reducing the use, handling and discharge of regulated substances.

Atmospheric emissions of major PRTR-regulated substances (quantity discharged by each plant [t/year])

Plant	1998	1999	2000	2001	2002	Plant	1998	1999	2000	2001	2002
<b>Toluene</b>						<b>Dichloropentafluoropropane (HCFC-225)</b>					
Tohoku plant	201	206	196	170	53	Tohoku plant	—	0	0	0	0
Kanto plant	87	178	166	113	99	Kanto plant	—	0	0	0	0
Toyohashi plant	4,674	3,790	2,824	1,723	1,155	Toyohashi plant	—	0	0	0	0
Kameyama plant	7	5	5	5	4	Kameyama plant	—	22	19	14	7
Shiga plant	0	0	0	0	0	Shiga plant	—	0	0	0	0
Onomichi plant	113	33	45	29	68	Onomichi plant	—	0	0	0	0
<b>TOTAL</b>	<b>5,082</b>	<b>4,212</b>	<b>3,236</b>	<b>2,040</b>	<b>1,379</b>	<b>TOTAL</b>	<b>—</b>	<b>22</b>	<b>19</b>	<b>14</b>	<b>7</b>
<b>Dichloromethane (Methylene chlorid)</b>						<b>Bis (2-ethylhexyl) phthalate (DOP)</b>					
Tohoku plant	0	0	0	0	0	Tohoku plant	0	0	0	0	0
Kanto plant	0	0	0	0	0	Kanto plant	0	0	0	0	0
Toyohashi plant	417	329	178	72	72	Toyohashi plant	4	3	5	4	4
Kameyama plant	1	0	0	0	0	Kameyama plant	0	0	0	0	0
Shiga plant	0	0	0	0	0	Shiga plant	0	0	0	0	0
Onomichi plant	0	0	0	0	0	Onomichi plant	0	0	0	0	0
<b>TOTAL</b>	<b>418</b>	<b>329</b>	<b>178</b>	<b>72</b>	<b>72</b>	<b>TOTAL</b>	<b>4</b>	<b>3</b>	<b>5</b>	<b>4</b>	<b>4</b>
<b>Xylene</b>						<b>Polyoxyethylene nonylphenyl ether</b>					
Tohoku plant	0	0	0	0	0	Tohoku plant	—	0	0	0	0
Kanto plant	27	27	25	24	14	Kanto plant	—	0	3	9	3
Toyohashi plant	4	4	2	2	2	Toyohashi plant	—	0	0	0	0
Kameyama plant	5	0	0	0	0	Kameyama plant	—	0	0	0	0
Shiga plant	0	0	0	0	0	Shiga plant	—	0	0	0	0
Onomichi plant	0	0	0	0	0	Onomichi plant	—	0	0	0	0
<b>TOTAL</b>	<b>36</b>	<b>31</b>	<b>27</b>	<b>26</b>	<b>16</b>	<b>TOTAL</b>	<b>—</b>	<b>0</b>	<b>3</b>	<b>9</b>	<b>3</b>
<b>Di-n-butyl phthalate (DBP)</b>						<b>Acrylic acid</b>					
Tohoku plant	0	0	0	0	0	Tohoku plant	0	0	0	0	0
Kanto plant	0	0	0	0	0	Kanto plant	0	0	0	0	0
Toyohashi plant	3	3	3	2	0	Toyohashi plant	3	4	1	1	1
Kameyama plant	0	0	0	0	0	Kameyama plant	0	0	0	0	0
Shiga plant	0	0	0	0	0	Shiga plant	0	0	0	0	0
Onomichi plant	0	0	0	0	0	Onomichi plant	0	0	0	0	0
<b>TOTAL</b>	<b>3</b>	<b>3</b>	<b>3</b>	<b>2</b>	<b>0</b>	<b>TOTAL</b>	<b>3</b>	<b>4</b>	<b>1</b>	<b>1</b>	<b>1</b>
<b>Ethylene glycol monomethyl ether (2-methoxy ethanol)</b>						<b>Ethylbenzene</b>					
Tohoku plant	—	0	0	0	0	Tohoku plant	0	0	0	0	0
Kanto plant	—	0	0	0	0	Kanto plant	0	0	0	0	8
Toyohashi plant	—	0	0	0	0	Toyohashi plant	0	0	0	0	0
Kameyama plant	—	2	2	0	2	Kameyama plant	0	0	0	0	0
Shiga plant	—	0	0	0	0	Shiga plant	0	0	0	0	0
Onomichi plant	—	0	0	0	0	Onomichi plant	0	0	0	0	0
<b>TOTAL</b>	<b>—</b>	<b>2</b>	<b>2</b>	<b>0</b>	<b>2</b>	<b>TOTAL</b>	<b>0</b>	<b>0</b>	<b>0</b>	<b>0</b>	<b>8</b>

—: Not measured because not applicable